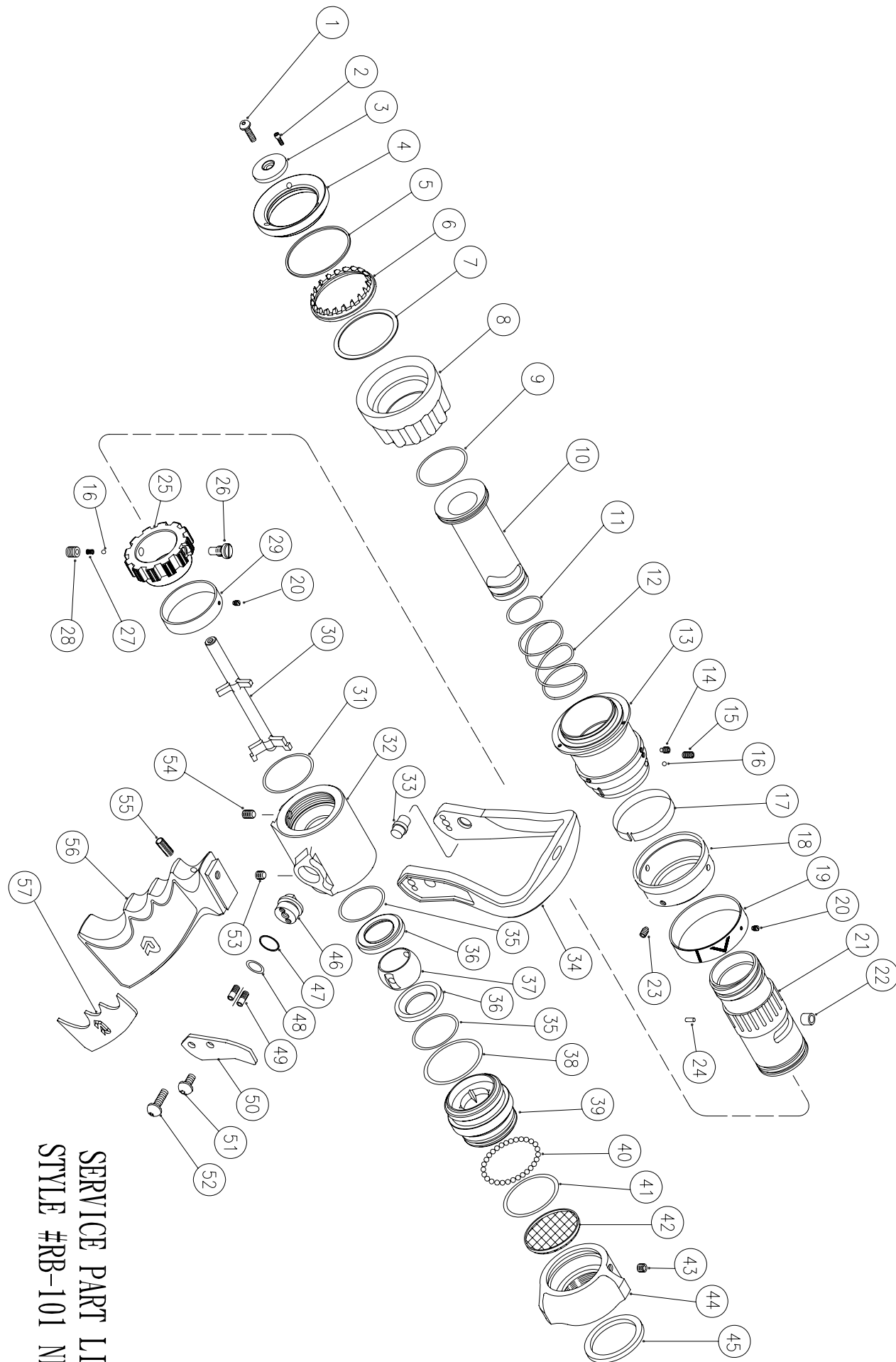


## SERVICE PARTS LIST FOR #RB-101 NFPA



SERVICE PART LIST  
 STYLE #RB-101 NFPA

ITEM NO.	DESCRIPTION	PARTS NO.	MATERIAL	QUANTITY	
1	SCREW(#10-24UNC)	S0025	304 S.S	1	
*2	SCREW(#4-40UNC)	S0065	304 S.S	3	
3	BAFFLE	A0010	ALUMINUM	1	
*4	RETAINING RING	A0008	ALUMINUM	1	
*5	TEETH BEARING	F0010	TEFLON	1	
*6	SPINNING TEETH	D0009	STAINLESS STEEL	1	
		D0010	ABS	1	
*7	TEETH BEARING	F0011	TEFLON	1	
8	BUMPER	D0023	EPDM	1	
9	O-RING(S-40)	O0210	EPDM	1	
10	DISCHARGE TUBE	A0040	ALUMINUM	1	
*11	O-RING(S-27.5)	O0120	EPDM	1	
12	SPRING	F0097	304 S.S	1	
13	PATTERN SLEEVE	A0030	ALUMINUM	1	
14	SCREW(#10-32UNF)	S0064	304 S.S	3	
15	SCREW(#10-32UNF)	S0130	304 S.S	2	
16	BALL BEARING(3.5)	F0069	304 S.S	3	
17	ROUND SPRING	F0021	STAINLESS STEEL	1	
18	WEAR RING	A0031	ALUMINUM	1	
19	INDICATING BAND	A0038	ALUMINUM	1	
20	SCREW(M3*0.5)	S0016	304 S.S	2	
21	NOZZLE BODY	A0050	ALUMINUM	1	
22	ROLLER	F0750	BRONZE	1	
23	SCREW(#10-32UNF)	S0090	304 S.S	1	
24	PIN(3MM*7.5L)	F0290	BRONZE	1	
25	CONTROL RING	A0059	ALUMINUM	1	
26	SCREW(5/16"-24UNF)	S0250	304 S.S	1	
27	DETENT SPRING	F0159	304 S.S	1	
28	SET SCREW(5/16"-24UNF)	S0074	304 S.S	1	
29	INDICATING BAND	A0037	ALUMINUM	1	
30	STEM	F0080	ALUMINUM	1	
*31	O-RING(S-38)	O0205	EPDM	1	
32	VALVE BODY	A0072	ALUMINUM	1	
33	DRIVE SHAFT	F0263	BRONZE	2	
34	HANDLE	A0906	COMPOSITE	1	
35	O-RING(S-36)	O0200	EPDM	2	
*36	SEAT	F0311	TEFLON	2	
37	BALL	F0110	BRONZE	1	
38	O-RING(G-45)	O0325	EPDM	2	
39	ADAPTER	A0917	ALUMINUM	1	
40	BALL BEARING(3/16")	F0076	304 S.S	31	
41	O-RING(G-42)	O0320	EPDM	1	
42	SCREEN	F0138	304 S.S	1	
*43	SCREW(1/4"-28UNF)	S0112	304 S.S	1	
44	SWIVEL(BSP)	A0295	ALUMINUM	1	
*45	GASKET(50*40*4)	D0070	EPDM	1	
*46	TRUNNION(LEFT)	F0100	STAINLESS STEEL	1	
	TRUNNION(RIGHT)	F0102	STAINLESS STEEL	1	
*47	GASKET	F0016	TEFLON	2	
*48	O-RING(P-14)	O0080	EPDM	2	
*49	SCREW(#10-32UNF)	S0131	304 S.S	4	
50	INSERT(LEFT)	A0911	ALUMINUM	2	2
	INSERT(RIGHT)			2	2
51	SCREW(1/4"-28UNF)	S0030	304 S.S	2	
*52	SCREW(1/4"-28UNF)	S0039	304 S.S	2	
*53	SCREW(1/4"-20UNC)	S0114	304 S.S	1	
54	SCREW(1/4"-20UNC)	S0116	304 S.S	1	
55	SCREW(1/4"-20UNC)	S0115	304 S.S	1	
56	PISTOL GRIP	A0137	COMPOSITE	1	
57	INSERT(LEFT)	A0907	PVC	2	2
	INSERT(RIGHT)			2	2

"\*" INDICATES PARTS INCLUDED IN REPAIR KIT