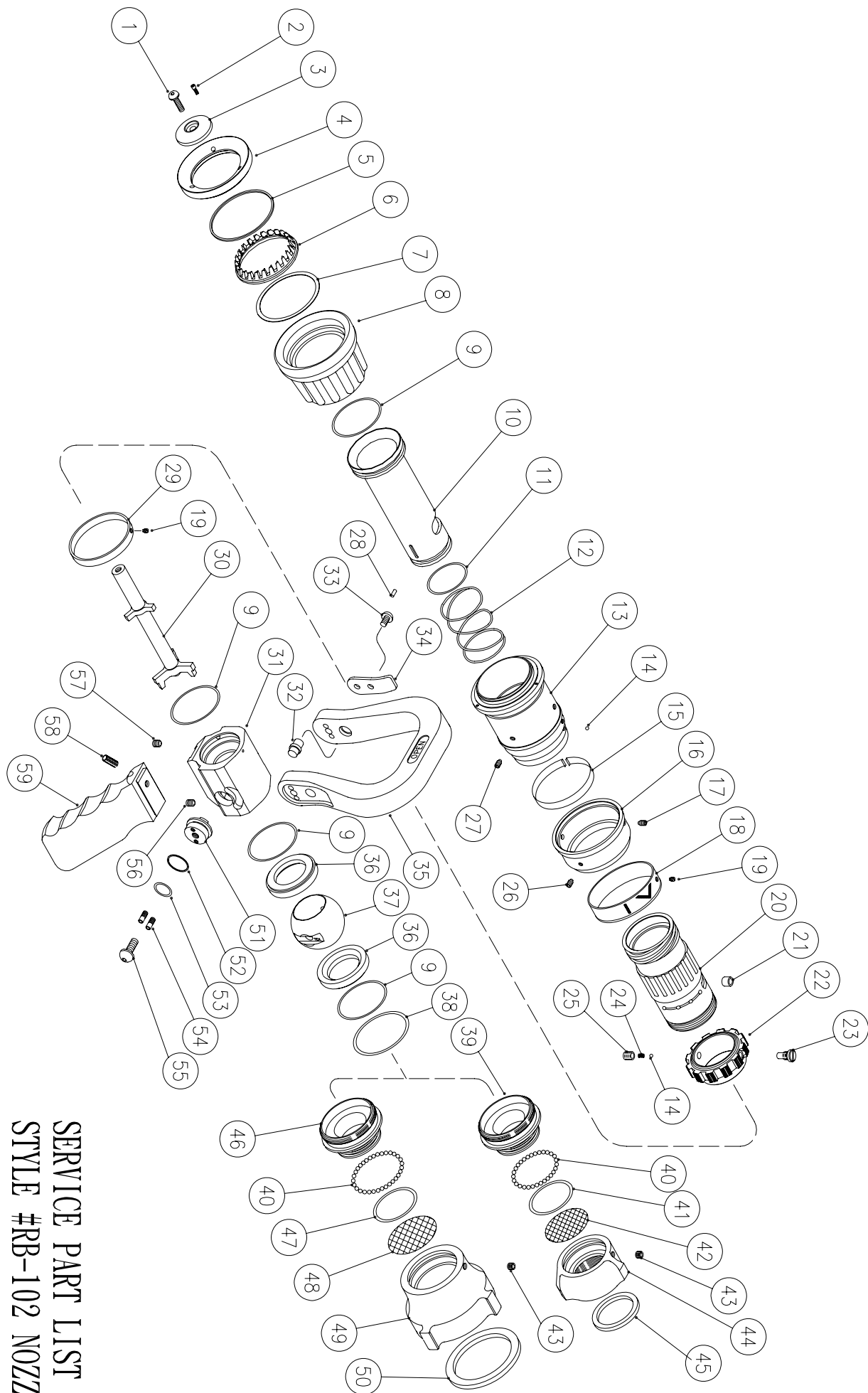


SERVICE PARTS LIST FOR BR-102 NOZZLE

| ITEM NO. | DESCRIPTION | PARTS NO. | MATERIAL | QUANTITY | | P |
|----------|---------------------|-----------|-----------------|----------|--------|---|
| | | | | BR-102 | BR-368 | |
| 1 | SCREW(1/4"-28UNF) | S0012 | 304 S.S | 1 | 1 | |
| *2 | SCREW(#4-40UNF) | S0065 | 304 S.S | 3 | 3 | |
| 3 | BAFFLE | A1010 | ALUMINUM | 1 | 1 | |
| *4 | RETAINING RING | A1019 | ALUMINUM | 1 | 1 | |
| *5 | TEETH BEARING | F0015 | TEFLON | 1 | 1 | |
| *6 | SPINNING TEETH | D0008 | STAINLESS STEEL | 1 | 1 | |
| | | D0011 | ABS | 1 | 1 | |
| *7 | TEETH BEARING | F0014 | TEFLON | 1 | 1 | |
| 8 | BUMPER | D0040 | EPDM | 1 | 1 | |
| 9 | O-RING(G-50) | O0330 | EPDM | 3 | 3 | |
| 10 | DISCHARGE TUBE | A1040 | ALUMINUM | 1 | | |
| | | A1043 | ALUMINUM | | 1 | |
| *11 | O-RING(S-38) | O0205 | EPDM | 1 | 1 | |
| 12 | SPRING | F0088 | 304 S.S | 1 | 1 | |
| 13 | PATTERN SLEEVE | A1030 | ALUMINUM | 1 | 1 | |
| 14 | BALL BEARING(4MM) | F0071 | 304 S.S | 2 | 2 | |
| 15 | ROUND SPRING | F0022 | STAINLESS STEEL | 1 | 1 | |
| 16 | WEAR RING | A1032 | ALUMINUM | 1 | 1 | |
| 17 | SCREW(3/16"-32UNF) | S0130 | 304 S.S | 2 | 2 | |
| 18 | INDICATING BAND | A1063 | ALUMINUM | 1 | 1 | |
| 19 | SCREW(M3*0.5) | S0016 | 304 S.S | 2 | 2 | |
| 20 | NOZZLE BODY | A1050 | ALUMINUM | 1 | | |
| | | A1052 | ALUMINUM | | 1 | |
| 21 | ROLLER | F0750 | BRONZE | 1 | 1 | |
| 22 | CONTROL RING | A1060 | ALUMINUM | 1 | 1 | |
| 23 | SCREW(5/16"-24UNF) | S0250 | 304 S.S | 1 | 1 | |
| 24 | DETENT SPRING | F0159 | 304 S.S | 1 | 1 | |
| 25 | SCREW(5/16"-24UNF) | S0074 | 304 S.S | 1 | 1 | |
| 26 | SCREW(#10-32UNF) | S0090 | 304 S.S | 1 | 1 | |
| 27 | SCREW(#10-32UNF) | S0064 | 304 S.S | 3 | 3 | |
| 28 | PIN(3MM*7.5L) | F0290 | BRONZE | 1 | 1 | |
| 29 | INDICATING BAND | A1064 | ALUMINUM | 1 | | |
| | | A1028 | ALUMINUM | | 1 | |
| 30 | STEM | F0082 | ALUMINUM | 1 | 1 | |
| 31 | VALVE BODY | A1072 | ALUMINUM | 1 | 1 | |
| 32 | DRIVE SHAFT | F0263 | BRONZE | 2 | 2 | |
| 33 | SCREW | S0030 | 304 S.S | 2 | 2 | |
| 34 | INSERT | A0919 | ALUMINUM | 2 | 2 | |
| 35 | HANDLE | A1022 | COMPOSITE | 1 | 1 | |
| *36 | SEAT | F0310 | TEFLON | 2 | 2 | |
| 37 | BALL | F0111 | BRONZE | 1 | 1 | |
| *38 | O-RING(G-55) | O0340 | EPDM | 1 | 1 | |
| 39 | ADAPTER | A1084 | ALUMINUM | 1 | | |
| 40 | BALL BEARING(3/16") | F0076 | 304 S.S | 31 | 35 | |
| *41 | O-RING(G-42) | O0320 | EPDM | 1 | | |
| 42 | SCREEN | F0138 | 304 S.S | 1 | | |
| *43 | SCREW(1/4"-28UNF) | S0112 | 304 S.S | 1 | 1 | |
| 44 | SWIVEL(1.5NH) | A0295 | ALUMINUM | 1 | | |
| *45 | GASKET(50*40*4) | D0070 | EPDM | 1 | | |
| 46 | ADAPTER | A1081 | ALUMINUM | | 1 | |
| 47 | O-RING(G-45) | O0325 | EPDM | | 1 | |
| 48 | SCREEN | F0188 | 304 S.S | | 1 | |
| 49 | SWIVEL(2.5"NH) | A1095 | ALUMINUM | | 1 | |
| *50 | GASKET(80*64*5) | D0071 | EPDM | | 1 | |
| *51 | TRUNNION | F0101 | STAINLESS STEEL | 2 | 2 | |
| *52 | GASKET | F0017 | TEFLON | 2 | 2 | |
| *53 | O-RING(P-19) | O0090 | EPDM | 2 | 2 | |
| *54 | SCREW(#10-32UNF) | S0131 | 304 S.S | 4 | 4 | |
| 55 | SCREW(5/16"-24UNF) | S0031 | 304 S.S | 2 | 2 | |
| *56 | SCREW(#10-32UNF) | S0120 | 304 S.S | 2 | 2 | |
| *57 | SCREW(1/4"-20UNC) | S0116 | 304 S.S | 2 | 2 | |
| 58 | SCREW(1/4"-20UNC) | S0115 | 304 S.S | 1 | 1 | |
| 59 | PISTOL GRIP | A0107 | COMPOSITE | 1 | 1 | |

"*" INDICATES PARTS INCLUDED IN REPAIR KIT



SERVICE PART LIST
 STYLE #RB-102 NOZZLE