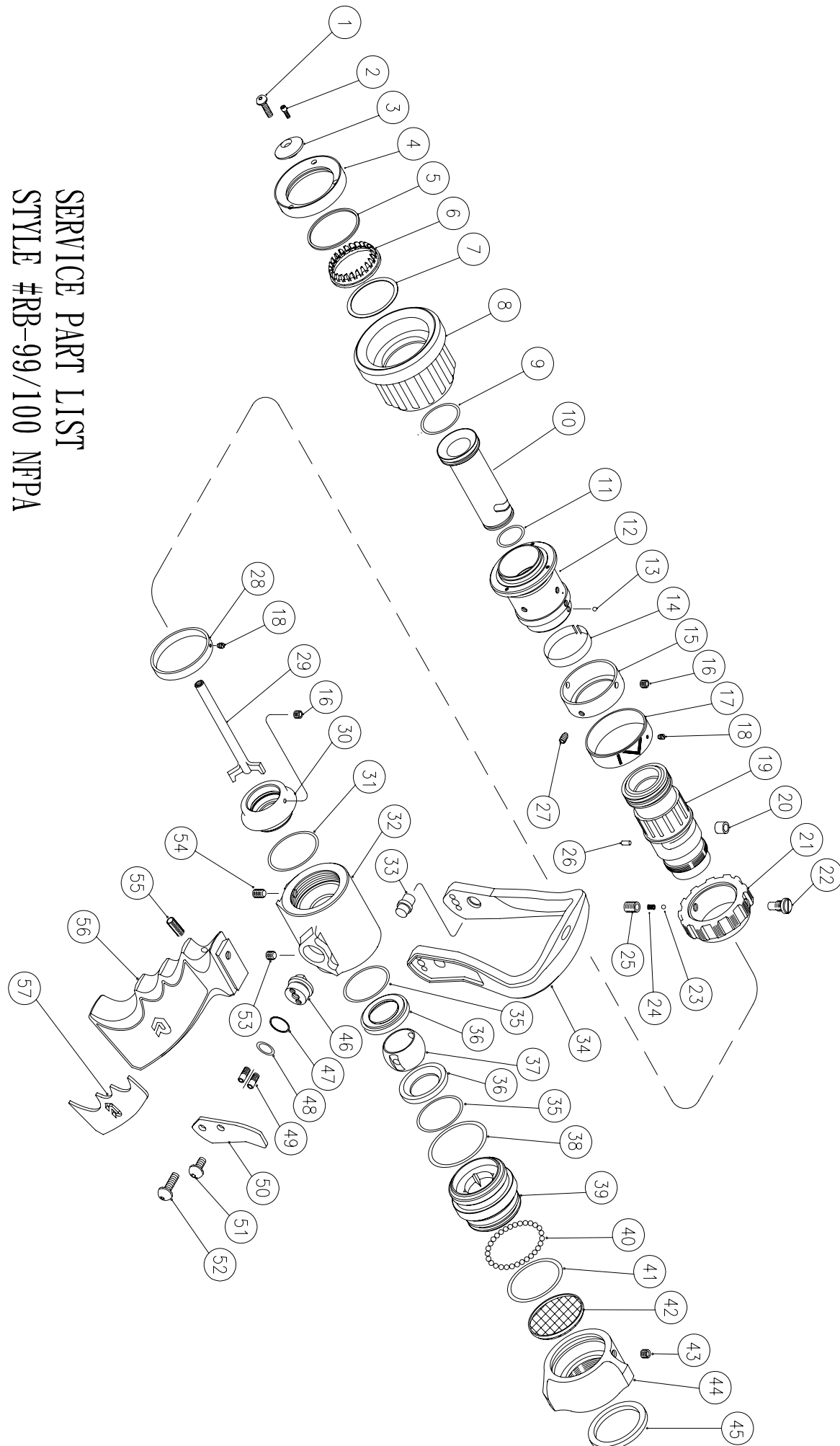


SERVICE PARTS LIST FOR RB-99/100 NFPA

ITEM NO.	DESCRIPTION	PARTS NO.	MATERIAL	QUANTITY		P
				BR-99	BR-100	
1	SCREW(#10-24UNC)	S0025	304 S.S.	1	1	
*2	SCREW(#4-40UNC)	S0065	304 S.S.	3	3	
3	BAFFLE	A0110	ALUMINUM	1	1	
4	RETAINING RING	A2019	ALUMINUM	1	1	
*5	TEETH BEARING	F0011	TEFLON	1	1	
*6	SPINNING TEETH	D0007	STAINLESS STEEL	1	1	
*7	TEETH BEARING	D0012	ABS	1	1	
*8	TEETH BEARING	F0012	TEFLON	1	1	
8	BUMPER	D0062	EPDM	1	1	
9	O-RING(S-30)	O0190	EPDM	1	1	
10	DISCHARGE TUBE	A4042	ALUMINUM	1		
		A4040	ALUMINUM		1	
*11	O-RING(S-22.4)	O0170	EPDM	1	1	
12	PATTERN SLEEVE	A4030	ALUMINUM	1	1	
13	BALL BEARING(3.5MM)	F0069	304 S.S.	2	2	
14	ROUND SPRING	F0024	STAINLESS STEEL	1	1	
15	WEAR RING	A4032	ALUMINUM	1	1	
16	SCREW(3/16"32UNF)	S0130	304 S.S.	6	6	
17	INDICATING BAND	A4039	ALUMINUM	1	1	
18	SCREW(M3*0.5)	S0016	304 S.S.	2	2	
19	NOZZLE BODY	A4052	ALUMINUM	1	1	
20	ROLLER	F0750	BRONZE	1	1	
21	CONTROL RING	A4059	ALUMINUM	1	1	
22	SCREW(5/16"-24UNF)	S0250	304 S.S.	1	1	
23	BALL BEARING(4MM)	F0071	304 S.S.	1	1	
24	DETNET SPRING	F0159	304 S.S.	1	1	
25	SCREW(5/16"-24UNF*)	S0074	304 S.S.	1	1	
26	PIN(3MM*7.5L)	F0290	BRONZE	1	1	
27	SCREW(#10-32UNF)	S0090	304 S.S.	4	4	
28	INDICATING BAND	A4141	ALUMINUM	1		
		A4142	ALUMINUM		1	
29	STEM	F0081	ALUMINUM	1	1	
30	COUPLING	A4100	ALUMINUM	1	1	
*31	O-RING(S-38)	O0205	EPDM	1	1	
32	VALVE BODY	A0072	ALUMINUM	1	1	
33	DRIVE SHAFT	F0263	BRONZE	2	2	
34	HANDLE	A0906	COMPOSITE	1	1	
35	O-RING(S-36)	O0200	EPDM	2	2	
*36	SEAT	F0311	TEFLON	2	2	
37	BALL	F0110	BRONZE	1	1	
*38	O-RING(G-45)	O0325	EPDM	2	2	
39	ADAPTER	A0917	ALUMINUM	1	1	
40	BALL BEARING(3/16")	F0076	304 S.S.	31	31	
*41	O-RING(G-42)	O0320	EPDM	1	1	
42	SCREEN	F0138	304 S.S.	1	1	
*43	SCREW(1/4"-28UNF)	S0112	304 S.S.	1	1	
44	SWIVEL(BSP)	A0295	ALUMINUM	1	1	
*45	GASKET(50*40*4)	D0070	EPDM	1	1	
*46	TRUNNION(LEFT)	F0100	STAINLESS STEEL	1	1	
	TRUNNION(RIGHT)	F0102	STAINLESS STEEL	1	1	
*47	GASKET	F0016	TEFLON	2	2	
*48	O-RING(P-14)	O0080	EPDM	2	2	
*49	SCREW(#10-32UNF)	S0131	304 S.S.	4	4	
50	INSERT(LEFT)	A0911	ALUMINUM	2	2	2
	INSERT(RIGHT)			2	2	2
51	SCREW(1/4"-28UNF)	S0030	304 S.S.	2	2	
*52	SCREW(1/4"-28UNF)	S0039	304 S.S.	2	2	
*53	SCREW(1/4"-20UNC)	S0114	304 S.S.	1	1	
54	SCREW(1/4"-20UNC)	S0116	304 S.S.	1	1	
55	SCREW(1/4"-20UNC)	S0115	304 S.S.	1	1	
56	PISTOL GRIP	A0137	COMPOSITE	1	1	
57	INSERT(LEFT)	A0907	PVC	2	2	2
	INSERT(RIGHT)			2	2	2

"*" INDICATES PARTS INCLUDED IN REPAIR KIT



SERVICE PART LIST
 STYLE #RB-99/100 NFPA